



Lockman Peck LLC

B100S SUPER SWING UNIVERSAL CONTROL

Our Control Has Everything

Activation 1

The signal to ground will activate the operator. If the module is in the ON mode (Low voltage ON/OFF must be to ground) and no current fault is present.

Activation 2

The signal is activated when the door is in motion. If the module is in the ON mode (Low voltage ON/OFF must be to ground) and no current fault is present.

Safety A

When the door is fully closed, the signal to ground will prevent activation. During the opening cycle (with lockout option to OFF), the door will go to safety speed when this signal is to ground. During the closing cycle (with lockout option to OFF), the door will go to very slow speed when this signal is to ground. When the door is fully opened the signal to ground will prevent the door from entering the closing cycle.

Safety B

When the door is full closed, the signal to ground will prevent activation. During the opening cycle, the door will go to safety speed when the signal is to ground. During the closing cycle, the door will go to a very slow speed when this signal is to ground. When the door is fully opened, the signal to ground will prevent the door from entering the closing cycle.

Delayed Activation

The signal to ground will start the delayed activation timer. Activation is generated when the timer expires. This signal is used to do door sequencing.

Hold Open

The signal to ground will hold the door open. If the module is in the ON mode (Low voltage ON/OFF must be to ground) and no current fault is present.

Low Voltage ON/OFF

The signal to ground enables the module. The module is disabled if this signal is not to ground.

Data

This is a signal output for sensors that require door status information. Door closed, door in opening cycle, and door is closing (in motion) are reported.

+24VDC DC power for sensors (500mA max.) 1 each

24VAC AC power for sensors (500mA max. each) 2 each

Electric Lock

A normally open and a normally closed contact are provided to drive a wide variety of electric locks

55955 Hoosier Avenue - Mishawaka, IN 46545
517.279.7533 - Toll Free: 877.279.7533 - Fax: 866.380.0125
email: sales@automatedentrance.com - www.automatedentrance.com
Woman Owned - Cage Code 4DWQ6 - GSA Number: GS-07F-0061T

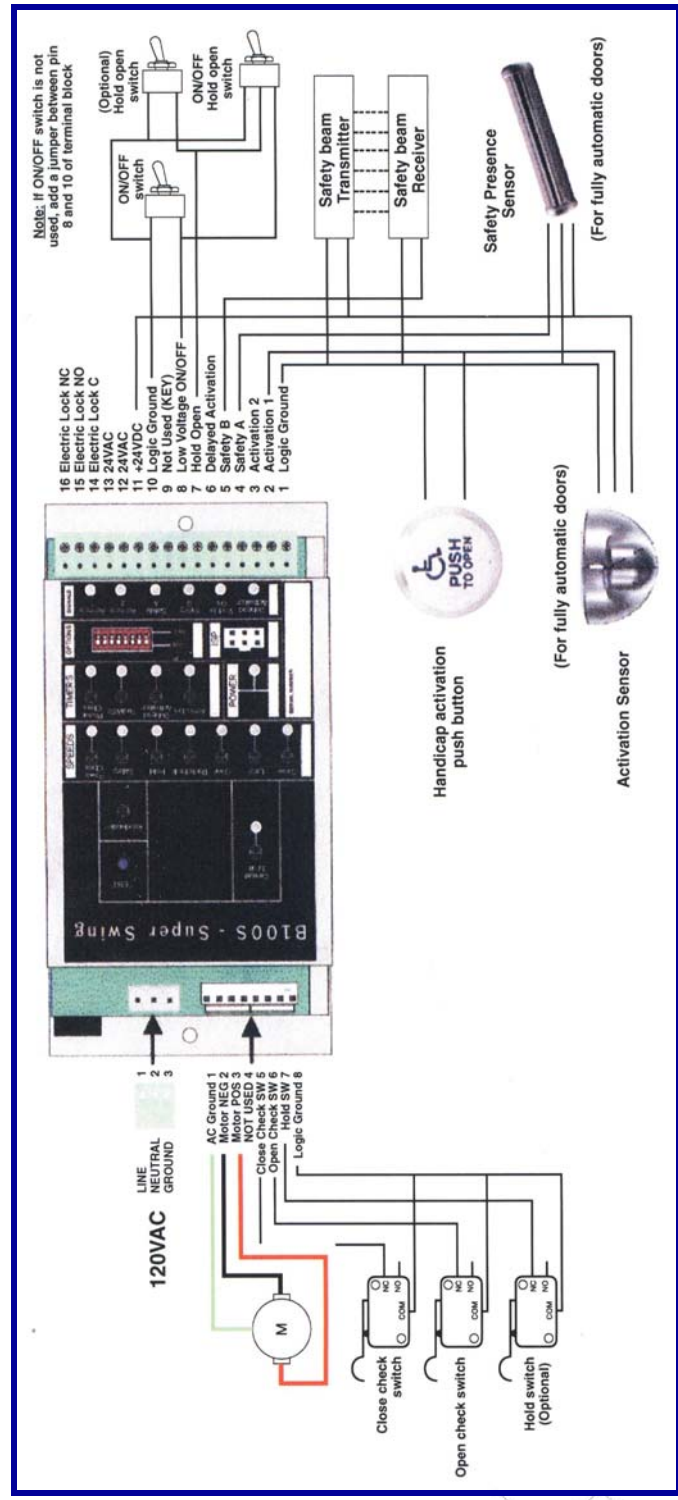


Lockman Peck LLC



B100S SUPER SWING UNIVERSAL CONTROL

Our Control Has Everything



OPTION DIP SWITCHES ON THE BOARD

- Push & Go (Use for handicap operator ONLY)** If this switch is set to ON, the operator is activated when the door is manually pushed.
- Lockout (Safety A)** If this switch is set to ON, safety A is disabled during the opening of the door until fully opened and during the closing of the door until fully closed.
- Electric Lock** If this switch is set to ON, a small delay is added prior to the door opening and to the unlocking of the electric lock.
- Power Close** If this switch is set to ON, a reverse power is applied when the door reaches latch check position.
- Reverse on Obstruction** When this switch is set to ON, a re-activation is generated should the door stall before reaching the latch position during a closing cycle.

Push & Go - For operators without a clutch

(Use for handicap operators only) Must have a close check switch. If the switch is set to ON, the operator is activated when the door is manually pushed outside the latch zone.

Door Seal (Power close option must be selected) If the switch is set to ON, the operator will create an auto seal when the door is fully closed.

Automated Entrance B100S

Universal Control will Operate

- Automated Entrance Model 2000
- Stanley Magic Access
- Nabco Gyro Tech 700/710
- Nabco Gyro Tech 300/400/500/600
- Nabco Gyro Tech Magnum
- Horton C4 160-2/C4190
- Horton C7 160
- Horton C4 160-1
- IR Dor-O-Matic Astro Swing (Switch type)
- IR Dor-O-Matic Junior Swing
- Hunter HA-8 (24V motor)
- KM 3000/3800